

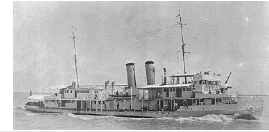
## US River Gunboat - USS Panay

<b>First Launch:</b> 1928	<b>No. Built:</b> 2
<b>Displacement:</b> 474 tons	<b>Crew:</b> 65
<b>Length &amp; Beam:</b> 191 x 28 ft	<b>Max Speed:</b> 16 knots

### Offensive and Defensive Equipment

2x 3" cannon                      1x Searchlight  
10x .30 cal MG

Hit Capacity: 33                      Victory points: 8



### Boiler vs. Speed Table

<b>Boilers Left</b>	=	2	1	0
<b>Max Speed</b>	=	1/3	1/6	DIW
<b>Defense Str</b>	=	16	15	15

### AAA: Opscale 0-0-3

Loc.	Battery	Type	Dir.	Arcs
Tower	MG-1	Single .30 cal MG	-	11-04
Tower	MG-2,3,4	Single .30 cal MG	-	01-05
	MG-5	Single .30 cal MG	-	02-07
	MG-6	Single .30 cal MG	-	05-10
	MG-7,8,9	Single .30 cal MG	-	07-11
	MG-10	Single .30 cal MG	-	08-01

USS Panay sunk by Japanese naval aircraft 100 miles up the Yangste river from Nanking. USS Tutuila given to Chinese Navy in Feb, 1942.

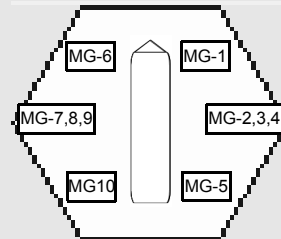
### Counter/Size = de/1

<b>Direct Hit Areas:</b>	<u>Bow</u>
<b>D10 roll to hit:</b>	1
<b>Command Teams:</b>	2
<b>Damage Control Teams:</b>	3

### Aircraft Handling Data

<b>Aircraft Carried</b>	
<b>A/C Catapults:</b>	0
<b>A/C Cranes:</b>	0
<b>RDC</b>	0

### AAA Location Guide



## Standard Oil River Tankers

<b>First Launch:</b> 1901	<b>No. Built:</b> 3
<b>Displacement:</b> 950-1118 tons	<b>Crew:</b> 20
<b>Length &amp; Beam:</b> 250 x 30 ft	<b>Max Speed:</b> 8-10 knots

### Offensive and Defensive Equipment

1x Searchlight

### AAA: Opscale 0-0-0

These were three small river oilers all of a similar size and age. These displayed the American flag - and were attacked by Japanese aircraft. They varied slightly in size and damage capacity:

Name	Built	Size	Hits	VP
Mei An	1901	935 tons	33	8
Mei Hsia	1926	1048 tons	41	10
Mei Ping	1927	1119 tons	43	11

Hit Capacity: 33-43                      Victory points: 8-11

### Counter/Size = Tk/1

<b>Direct Hit Areas:</b>	<u>Vessel</u>
<b>D10 roll to hit:</b>	1
<b>Command Teams:</b>	2
<b>Damage Control Teams:</b>	-

### Boiler vs. Speed Table

<b>Boilers Left</b>	=	2	1	0
<b>Max Speed</b>	=	1/5	1/6	DIW
<b>Defense Str</b>	=	12	12	12

### AAA Firepower vs. Range Table

AAA Type	Max. Rng.	Crits	<u>0-2</u>	<u>3-5</u>	<u>6-8</u>	<u>9-12</u>	<u>13-16</u>	<u>17-21</u>	<u>22-27</u>	<u>28-35</u>	<u>36-45</u>	<u>46+</u>
.30 cal MG	12	4	4	3	2	1	--	--	--	--	--	--